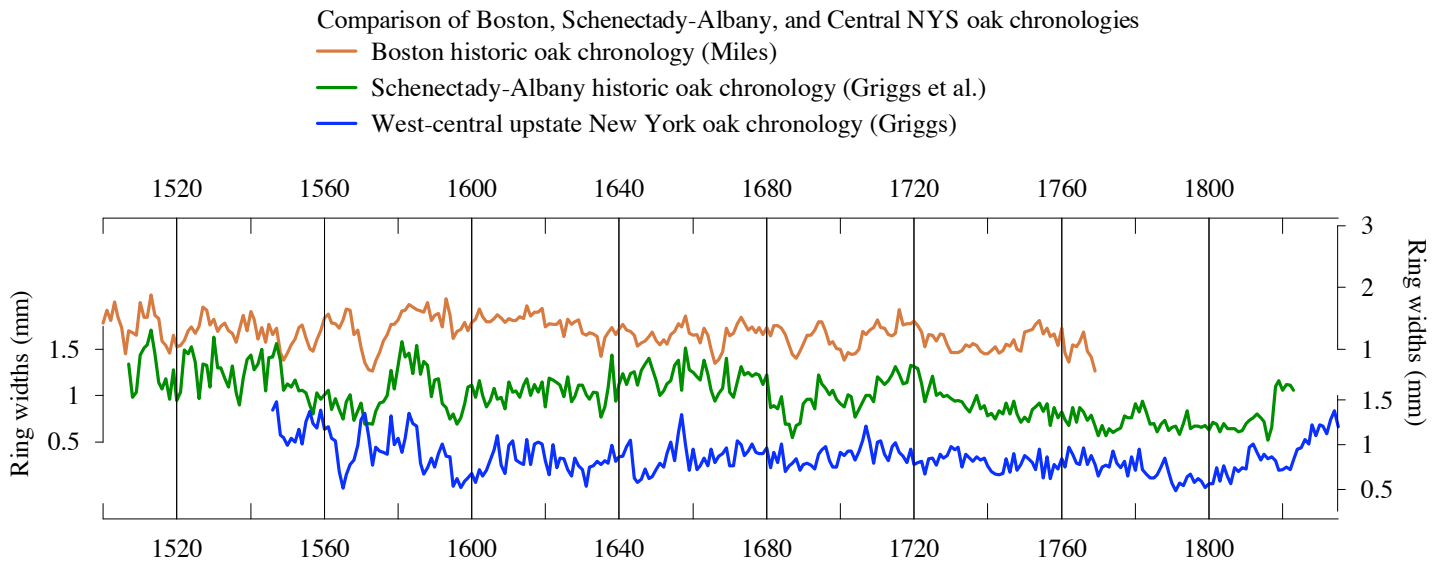


Revision – March 09 – the Mabee Farm “barn beams” are really the floor beams from the Tavern. The end date for the tavern is 1795 or soon after.

The “full sapwood” and/or presence of bark above indicate that the year at the end of the sequence is when the trees were felled, and its use for the building was within a few months, usually within the year. One exception to this is when the trees were felled in early winter and the building was built in the next calendar year.

In the graph below, the chronology built of the sequences shown above is compared with two independent chronologies. This is how the calendar dates for the chronologies above were determined. The New York oak chronology ends with tree-ring data from modern oaks with known felling dates (the modern part is not shown here).



24 April 2009
Carol Griggs
Dendrochronology Lab
Cornell University
Ithaca, NY 14853
dbg4@cornell.edu