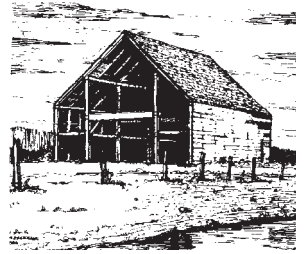


# DUTCH BARN PRESERVATION SOCIETY NEWSLETTER

FALL 2009

VOL. 22, ISSUE 2



## The Many Lives of the River Street Barn

*Keith Cramer*

Preservationists enjoy trumping the latest generation of sustainability promoters by declaring that the 'greenest' building is one that already exists, preferably an historic one. The River Street Dutch Barn is proof that the art of sustainable building has always existed, given these key ingredients could come together; simple, efficient design, quality craftsmanship and materials, and a succession of owners who know the value accrued by maintaining their buildings.



Photo 1. The River Street barn standing on its former site in Middleburgh, looking east, 2003 (Photo by Keith Cramer).

The River Street Barn, formerly located in Middleburgh, Schoharie County, is a model of the preservationist's concept of sustainability (Photo 1). It is once again crossing over into another reincarnation. This is at least its fourth life. After nearly six years in storage, it is being reconstructed to serve as a garage and carpenter's shop at a private residence in Albany County.

Getting here has been a long, mostly undocumented, and speculative trip. According to the previous owner, the barn may have come from the Hudson Valley, purchased to replace one that was burnt by

raiding parties in the Revolutionary War. Given its last location less than a hundred yards from the Schoharie Creek and within the Middleburgh Village limits, it's possible that it was part of the first phase of barn rebuilding after the war.



Photo 2. Joint with strange symbol made from round gouge strikes (Photo by Keith Cramer).

Evidence of the barn's previous lives is found throughout the structure. Most rafters have three birds' mouths at the purlin line suggesting they were on their third roof construction, if not on other buildings. It is a scribe rule barn with the usual chiseled marriage marks at the joints, but all the marks are not in the logical sequence beginning at Bent 1, the layout end. A few joints have two numbers and some braces to the purlin plate have unrecognizable symbols made with a gouge (Photo 2). One guess is that if it was on its third reconstruction, the builder may have created a new numbering system to avoid the confusion of a couple old numbering patterns that didn't match with the current layout.

*(continued on page 2)*



Photo 3. Interior as it looked in Middleburgh showing added bay, looking west, from the loft (Photo by Keith Cramer).

From the four main Dutch H-bents, it seems the barn began its life as an average-sized, three-bay barn, 45-feet wide by 35-feet long, with a 26-foot wide center aisle and equal 9-1/2-foot side aisles. It had 12-foot high side walls and 10" x 22" inch center anchor beams and very nicely made 7" x 10" braces.

The original barn only had one double door and pentice roof, located in Bent 1 facing west towards the creek. The door had two leaves in an 11 x 11 foot opening. Evidence suggests these were pivoting doors, sometimes called 'haar hung' doors. The underside of the gable anchor beam, has two, 3" diameter drilled holes next to the door posts. Corresponding holes were also seen in the original door sill, which was not salvageable.

Perhaps because we have begun specifically looking for them, pivoting doors have come to seem much more common than was previously thought. On two

DBPS tours this year we found pivot holes at the Tarbox barn in Rensselaer County and the Wagner barn in Albany County.

In the last Middleburgh reconstruction, a 20 foot bay was added

to the layout end, a typical 1800s adaptation to increase hay storage (Photo 3). Bent 1 was moved out to the new gable and an 'English' style bent, with center post, was added, that now became Bent 2 of the new four-bay barn. The existing wall plates and purlin plates were fabricated for this change; all are the full new building length of 55 feet, and they have no older, unused mortises (Figures 1 and 2).

In the new reconstruction, the owners decided to reconfigure the original three-bay barn to be used as a garage/barn and to use the added 20-foot bay as a carpenters shop (Photo 4). Bent 1, the original layout end gable with the double door opening, was moved back inside, once again switching places with the English bent. This 'interior' gable end will get wood siding and the pivot doors will be recreated so that from inside the garage, it will look like a true three-bay New World Dutch barn.

All original rafters were put into the three-bay section to reduce the span for reconstruction. Some rafters were very slender—barely

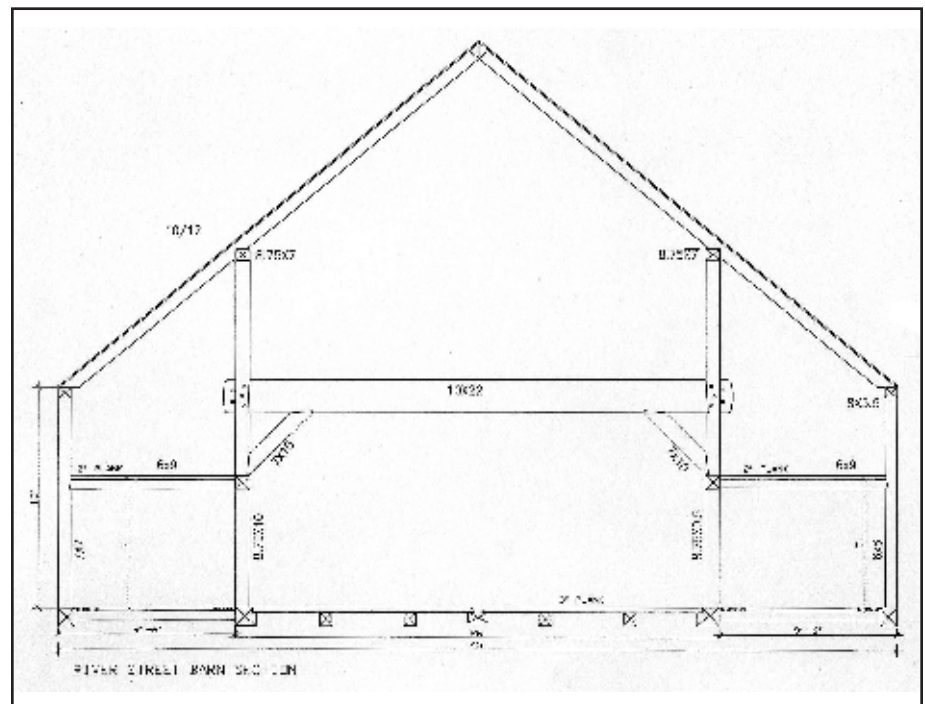


Figure 1. River Street Barn, typical bent section (Drawing by Keith Cramer).



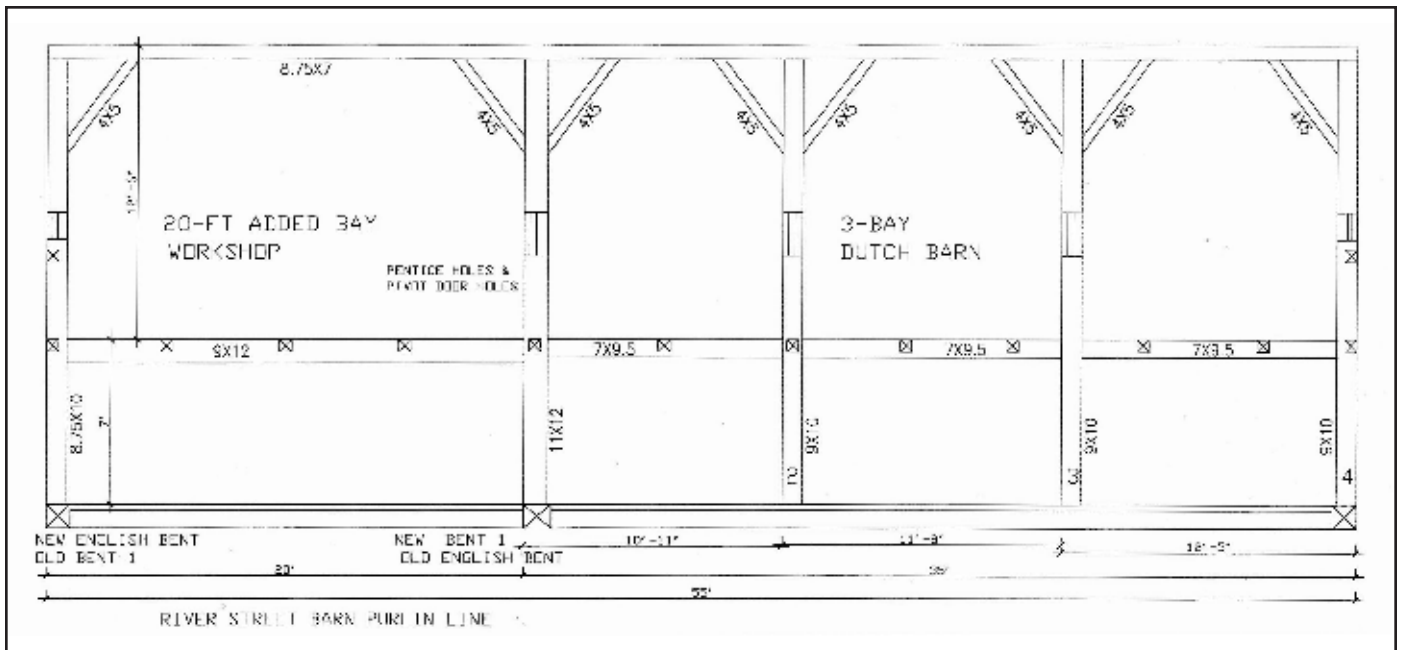


Figure 2. River Street Barn, purlin line (Drawing by Keith Cramer).

3" x 3" at the peak—considering the original spacing of five feet on center. The middle birds' mouth is being used again, and is about 12 feet from the outside end of the rafter foot, which gives the roof a 10/12 slope. New, beefier rafters were installed in the 20-foot bay.

The new owners believed that this project presented a good opportunity to rescue some historic materials that were languishing in various collectors' stockpiles. The new sills are all recycled mill timbers, some up to 42 feet long. Many floor boards are also recycled mill sub-flooring planks. Some door hardware and pancake hinges were found on eBay. The foundation stones are beautiful cut limestone from a demolished 1840s Albany County building.

The final ingredient sustainability promoters need to know before a building can be considered 'green' is whether or not it will remain affordable and be a good investment over the useful life of the building; that is, does it pass the life-cycle cost analysis.

The River Street Barn has passed that test several times; just pick any one of its lives!



Photo 4. River Street barn on its new site, November 2009. Old rafters are up on the 3-bay section. Partial siding on 'interior' gable wall that will separate the barn from the workshop (Photo by Keith Cramer).



# "To Be Sold": Eighteenth Century Real Estate Advertisements from New Jersey and Pennsylvania Newspapers.

Walter Richard Wheeler

Early American newspapers are a gold mine of information pertaining to material culture. Real estate advertisements are a particularly rich source of data relevant to landscape uses, house and barn forms, and construction techniques employed in various regions since the descriptive text was often the sole inducement at hand to entice a potential purchaser to visit the property.

An examination of a number of newspapers from New Jersey and Pennsylvania predating 1790 has yielded a group of ads that, taken together, are evocative of the rural landscape of New Jersey—and in one in-

stance—Pennsylvania. At every site described in the following ads a "Dutch barn" is specifically noted as being among the built improvements. Newspaper research such as this is an important component of the work being conducted for the Survey of New World Dutch Cultural Resources that we, in concert with the Society for the Preservation of Hudson Valley Vernacular Architecture, are undertaking.

Now opening, and to be sold on the most reasonable terms, by  
**JOHN COX, junior,**  
 At his store in Third-street, four doors above Market-street,  
**A** LARGE assortment of merchandize, suitable to the season.

Said Cox hath also for sale, Madeira wine, of the vintage 1763, by the pipe, hoghead or quarter cask. Likewise a very valuable farm, containing 400 acres of extraordinary wheat land, being pleasantly situated on the river Delaware, in Kingwood township, Hunterdon county, West New-Jersey, about 30 miles above Trenton, and 40 distant from Philadelphia; whereon are a good frame house, a large Dutch barn near 50 feet square, an orchard of 500 apple trees of the best grafted fruit, and a well of good water. The situation is high, and remarkably healthy. About two thirds of the land is cleared, and in good fence, the remainder well timbered and watered. Any person inclining to purchase said farm, may have two or three years for the payment of the purchase money, without interest, giving good security for the same.

N. B. All persons indebted to said Cox, above twelve months, are requested to make immediate payment. 3 M.

1. *Pennsylvania Gazette*, 19 November 1767, p. 1 supplement.

*Windsor, March 24, 1772.*

**T O B E S O L D,**

**A** VALUABLE plantation, containing about 420 acres of good land, situated in the township of Windsor, in the county of Middlesex, and province of New-Jersey, adjoining to Stony Brook, at a place known by the name of Penn's Neck, and within two short miles of Prince-Town, in view of the College, about half a mile from an excellent grist-mill and tanning-mill, both which places are a ready market for all sorts of grain and produce, being an exceeding healthy part of the country; on the said plantation are a good new 2 story stone dwelling house, 33 feet square, with a good dry cellar under the whole, a frame kitchen, and a well of excellent water near the door, a pale garden, a very large Dutch barn and stables 40 by 38 feet, a choice waggon-house, with a good hay-loft, and two cribs under the same roof, that will contain near 1000 bushels of corn, a fine thriving orchard near the same, also cherry and peach trees, a considerable quantity of low land and meadow, about 120 acres of plow-land cleared, and well improved, with good fencing, chiefly a fertile soil, exceeding good for wheat, Indian corn and rye; near the farm is a famous unimproved white-oak timber swamp, containing 60 acres. Any person inclining to purchase, is desired to view the premises; a clear and indisputable title will be given; and for terms (which will be reasonable) apply to the subscriber, living on the premises. **CORNELIUS GOVERNOR, †**

2. *Pennsylvania Gazette*, 2 April 1772, p. 4

## OFFICE for the Sale of REAL ESTATES. T O B E S O L D,

The following Plantations, Houses, Lots and Lands, viz.  
**A** VALUABLE plantation and tract of land, situate about ten miles from Trenton, up the river road, in Hunterdon county, West New-Jersey, containing 370 acres; 200 acres cleared; about 20 acres of meadow made, and ten more to make; remarkably well fenced and watered; the remainder woodland excellent good; part of the land rough but produces fine crops and grats, the fields properly divided with plenty of water in each, a young apple orchard and a good garden; there are on premises a large stone dwelling-house, two stories high, with a stone kitchen adjoining, an excellent Dutch barn with sheds on each side that will contain 20 horses, with several other convenient buildings.

A plantation situate in Newcastle county, near the Trap, containing 150 acres, well fenced and in good repair, with a good orchard, and a new frame dwelling house well finished.

A plantation and tract of land situate in West-Cala township, Chester county, about 44 miles from Philadelphia, containing about 128 acres, ten acres of meadow made and a large quantity more to make, a sufficient quantity of woodland, and a good young orchard just beginning to bear; there are on the premises, a good two-story house well built of hewn logs, the gable end built of stone and contained about six feet on each side, four rooms on a floor, the situation very healthy and agreeable, and would suit extremely well for a store or public house; a log barn, stables, and a good spring and spring-house.

A lot of ground containing about 2 acres, another of about 2 acres and a half, and another of half an acre, situate about two miles from the city, a little to the northward of Springetisbury, and near the river Schuylkill.

A lot of ground situate on the south side of Market-street, near Seventh-street, containing 36 feet front, and in depth 124 feet to a ten feet alley leading into Seventh street.

Four two-story brick houses and lots of ground thereto belonging, two of them situate on Duke-street, and two situate on an 8 feet alley running from Duke-street into Green street, nearly opposite to John Williams's in the Northern Liberties, with a yearly ground rent of 31. Ifsuing out a lot of ground adjoining the above. All three lots of ground, two of them situate on the west side of Second-street, and one on German-street continued in the district of Southwark: The whole clear of groundrent.

Two brick houses and lots of ground situate on the south side of Vine-street, between Front and Second-streets, in the said city, the lot containing 27 feet 3 inches front by 51 feet deep.

Likewise a great number of other houses and lots in and near the city, plantations in the country, and a great quantity of unimproved tracts of land in most of the different counties. For a more particular description of the above premises and the terms of sale, apply to EDWARD BONSAULT, or ABRAHAM SHOGMAKER, at his office in Fourth street, between Spruce and Pine-streets, and opposite the end of Union street, where Dredt, Mortgages, Bonds, Wills, and all other kind of Writings are done with the greatest care, newness and dispatch, and money let out at interest.

3. *Pennsylvania Packet*, 20 October 1778, p. 4.



## T O B E S O L D, T W O F A R M S.

**T**HE one on which the subscriber lives, containing two hundred and seventy-three acres of land, forty acres of which is good mowing ground, thirty acres more is sowed with grass seed and will be fit to mow the ensuing year; eighty acres is covered with fine white oak timber; the remainder is good arable land, fit for raising all kinds of grain; the whole under complete fence, (chiefly new rails) and in small enclosures, and well watered. There is on said farm a good dwelling-house two stories high, almost new, a large and commodious new kitchen with a well of good water by the door, a large Dutch barn, new cider works complete, smokehouse, barracks, cowsheds, &c. a large apple orchard in full growth, a young apple orchard containing near three hundred trees of the best grafted fruit, a number of peach trees, and a peach nursery that will be fit to plant out next spring. The purchase may be accommodated with an ample quantity of all kinds of farming utensils, horses, cattle, sheep, hogs, &c. grain and roots for a family, and storage for the stock. N. B. There is cut into proper lengths and piled up on this farm as much good wood as will be sufficient for two years fuel.

The other farm joins this, and contains one hundred and fifty-three acres, above one third of which is well timbered woodland, fifteen acres of it mowing ground, the rest good arable land. There is on it a good farmhouse one and a half stories high, has three rooms on a floor, a good kitchen, with a well of good water at the door, a shop and a good English barn, two fine apple orchards which annually produce a large quantity of cider, a number of peach, cherry and pear trees. This farm was rented in February 1778, for seven years, at fifty pounds per year rent, and the proprietor to have half the fruit that the orchards produce every year; the tenant is bound to have the whole farm enclosed at the expiration of the lease under a fence of eight rails high with stakes and riders, and the clear land divided into seven fields and under fence of seven rails with stakes and riders. Both farms lie at sixteen miles distance from Brunswick Landing, and twenty-two miles from Elizabeth Town. For terms apply to Mr. Alexander Stewart, Merchant, in Philadelphia, or the owner,

JOHN SHAW.

Bernard's Town, Somerset County, New Jersey.

4. *Pennsylvania Packet*, 15 August 1780, p. 1.

## T O B E S O L D,

**A** Valuable TRACT of LAND, in Hardwick township, Sussex county, State of New-Jersey, now in the tenure of Thomas Silverthorn. It contains 213 acres, 130 very rich meadow land, about 30 of which produce the best clover, timothy, and blue grass. It is excellent for raising hemp, and well calculated for raising and fattening cattle. There are on the premises, besides the dwelling house, a pretty good Dutch barn, stables, barracks, and spring house, upwards of one hundred apple-trees, and a number of cherry and peach-trees; also a never failing spring of water sufficient for a hemp-mill, and situated conveniently to water a considerable quantity of the meadow. The title is indisputable. For terms apply to the subscriber, in Trenton.

ISAAC COLLINS.

5. *Pennsylvania Packet*, 27 February 1781, p.4.

## T O B E S O L D,

**A** Valuable FARM in the township of Shrewsbury, county of Monmouth, and State of New-Jersey, containing about 70 acres; the one half of which is wood-land, and the remainder very natural to grass or any kind of produce; upon which is a very commodious dwelling house, 30 feet front, 4 rooms on a floor, with a kitchen adjoining it, a large Dutch barn, three horse and other out buildings. It is thought to be one of the best stands in the county for a merchant or any kind of public business, being situated in a very tick fertile country, and remarkably healthy; about 6 miles from Long Branch, 9 from Black Point and 10 from Monmouth Courthouse. For further particulars apply to the Printer, on the subscriber near the premises.

ELISHA NEWELL. Dec. 6.

6. *Pennsylvania Packet*, 10 December 1782, p. 3.

## T O B E S O L D O R L E T, (And may be entered on the first of April next)

**A** FARM in Nockamixon township, Bucks county, containing 340 acres of good land, well timbered, about 40 of which are good meadow, and more may be made at a small expense; there are on the premises a good stone house about 40 feet by 30 two stories high, with 4 rooms on a floor, good garters, and a cellar under the whole, also a stone kitchen adjoining the same, a large Dutch barn and other out houses, with four orchards and a nursery of grafted fruit there; I know on full plantation, a country grist mill which has constant business; good lime may be got within three or four miles water carriage, also a sure lead mine with a lease belonging to it.

The above described Farm is pleasantly situated on the river Delaware from whence there are frequent opportunities of sending produce to Philadelphia by water.

For terms apply to *Mathew Shumaker*, on the premises, about 6 miles below Durham and 43 miles from Philadelphia; or to *THOMAS FOXREST* in Philadelphia, who will make the payment easy to the purchaser, or barter it for Land near Philadelphia, or List or Railings in the city.

In a Philadelphia January 17

eptf

7. *Pennsylvania Packet*, 13 February 1787, p. 1.

## To be Sold at Private Sale,

**A** VALUABLE PLANTATION, situate on Raritan, in Bridgewater township, Somerset County, containing about sixty-four acres, eight of which is woodland. The said farm joins the land of Jacob Van Noorelant, and lands formerly belonging to Samuel Staats Cozamus, dec. and fronts Raritan river. There is also on the premises a good framed house with four rooms on a floor, a Dutch barn with a plank floor, a very convenient tan-yard, bark-house and bark mill, and a good well of excellent water that never fails near the door, and a brook that runs through the whole premises, which is fed by a number of springs, and waters every field; in a common year may be cut ten loads of excellent hay, and more meadow can be made; there is also an orchard of sixty bearing trees, and sundry sorts of fruit trees; the said premises in good repair. Any person inclining to purchase the same may know the terms of sale by applying to *Yellias Hopper*, who will give an indisputable title for the same.

YELLAS HOPPER  
Raritan, Aug. 6, 1787.

8. *Pennsylvania Evening Herald*, 20 September 1787, p. 1.



**To be Sold,**

and possession to be given immediately. THAT valuable FARM on which the subscriber now lives, with all the green grain on the ground, as may best suit the purchaser. This farm lies in the western precinct, in the county of Somerset, State of New-Jersey, containing 442 acres of excellent land, 170 of which is good wood land. There can be cut on said farm 50 tons of the best hay at the first cutting. This farm is divided into seven fields, two apple orchards and a peach orchard, all in good fence and well watered. It lies 9 miles from Princeton, and 14 from the social city of New Brunswick. The buildings on the farm consist of a large commodious stone house, well finished, a kitchen and a dairy 30 feet from the house where a churn goes by water, two spacious Dutch barns, two large cow hovels, a granary, and several other out buildings, all in excellent repair. This farm is worthy the attention of the philosopher, or the retiring gentleman.

HENRY VECHTE.

April 11.

JAW5

9. Dunlap's American Daily Advertiser, 18 April 1795, p. 2 supplement.

**FOR SALE.**

A PLANTATION containing thirty acres whereof three are woodland, the residue arable land, with a good convenient small house, and a small Dutch barn, a young bearing orchard, the most part in good fence; the land is as good as any in the neighbourhood. It lies a small distance from the post road leading from New York to Philadelphia, ten miles from New Brunswick, and seven from Princeton. A good and sufficient title will be given, and the terms and conditions will be reasonable. Apply at this office.

Dec 31

dit

10. Aurora General Advertiser, 31 December 1803, p. 4.

**TO BE SOLD,** a plantation containing 200 acres of good land, well watered and timbered, and good meadow ground, with a small frame house with two rooms, a Dutch barn not thatched, with a young bearing orchard; situate in Bedminster, Somerset county, State of New-Jersey, adjoining Peter Demond, about two miles from New-Germantown on a road leading to Pluck'emin, and may be entered upon immediately. For terms apply to the subscriber near the premises.

April 2d, 1779.

DANIEL HENRY.

11. New-Jersey Gazette, 28 April 1779, p. 4.

**To be sold by publick Vendue,**  
On Wednesday, the 25th Day of November next,

**A PLANTATION,** containing 410 acres, late the property of Valentine Ect, late of Amwell, deceased, lying within one mile of Howell's ferry; whereon is a good stone dwelling-house, a good Dutch barn, a large bearing orchard, a convenient tan-yard, with a good stone currying-shop. One half of said plantation is cleared and in good fence, fifteen acres of good meadow, and more may be made. The whole is well watered. The conditions will be made known at the time and place of sale, and an indisputable title given by

SARANNAH ENT, } Executrix,

PETER MOORE, } Executor.

Amwell, Hunterdon county, Sept. 23, 1778.

12. New-Jersey Gazette, 7 October 1778, p. 4.

**TO BE SOLD,**

**THE FARM** whereon the subscriber now lives, situate within 5 miles of Cranberry town, 7 of English town and 6 of Spottwood, containing near 150 acres, has a large proportion of woodland, 'about 50 acres, and a sufficiency of meadow can be made, there being several acres of swamp clear'd and ditch'd for that purpose. On the land is a convenient dwelling house, kitchen and cellars, a brook and well of good water, large Dutch barn covered with cedar, about which have been cut several tons of the best of hay, an excellent orchard, cyder mill and press. The stock and farming utensils are also for sale. The purchaser will be put in possession of the premises by the first of May, or sooner if required.

JOSEPH VICKERS.

Cranberry, State of New-  
Jersey, Jan. 27, 1779.

13. New-Jersey Gazette, 10 February 1779, p. 4.

**TO BE SOLD** at publick vendue, on Monday the 10th day of August, instant, a Plantation belonging to the estate of Garret Dorreland, deceased, in the western precinct of the county of Somerset, within one mile of Sourland meeting-house, containing one hundred and forty-eight acres, whereof 20 acres are good wood-land, some meadow and more may be made, a small orchard, an excellent spring of water at the door, a good frame house with a Dutch barn almost new. Also at the same time will be sold on the premises, household and kitchen furniture, and a few farming utensils. The vendue to begin at ten o'clock of said day, where due attendance will be given, and conditions of vendue made known by

HENRY VANDIKE, Executor.

14. New-Jersey Gazette, 4 August 1779, p. 3.

**TO be sold** at publick vendue, on Monday the 27th of September inst. at one o'clock, P. M. on the premises where Jacob Hoageland now dwells at Sourerland in the county of Somerset, New-Jersey, a valuable Farm, containing about 200 acres of very good land including meadow, and wood sufficient for said farm, a good dwelling house and kitchen, a large Dutch barn covered with cedar shingles, an orchard of various kinds of fruit, &c. late the property of John Hoageland, Esq. deceased. The conditions to be made known on the day of sale, by

JACOB HOAGELAND;

GEORGE BERGEN, .

CHRISTOPHER HOAGELAND. } Execu-

tors.

15. New-Jersey Gazette, 22 September 1779, p. 3.

**TO BE SOLD,**

**A Valuable TRACT** of LAND, in Hardwick township, Suffolk county, state of New-Jersey, now in the tenure of Thomas Silverthorn. It contains 213 acres, 170 very rich meadow land, about 30 of which produce the best clover, timothy, and blue grass. It is excellent for raising hemp, and well calculated for raising and fattening cattle. There are on the premises, beside the dwelling-house, a pretty good Dutch barn, stables, barracks and spring-house, upwards of one hundred apple-trees, and a number of cherry and peach-trees; also a never failing spring of water sufficient for a hemp-mill, and situated conveniently to water a considerable quantity of the meadow. The title is indisputable. For terms apply to the printer of this paper.

16. New-Jersey Gazette, 17 January 1781, p. 3.



**F O R S A L E,**

**T**HE grist-mills and saw-mill of the subscriber, situate on the south branch of Raritan, near the forks of Raritan, a never-failing stream, consisting of a large mill-house with two run of stones, merchant and country bolts, a convenient saw-mill, two dwelling-houses, with a large merchant's store, Dutch barn, and out houses—a large orchard, mostly grafted, with 80 acres of good land adjoining the mill, 15 acres of which is excellent meadow, lying on the river, 20 acres wood-land, and the rest tillable, well watered, and had, and other fish caught by the door—a very healthy place, and is a good mill seat, lying in the midst of a thick settled country, and a good stand for trade, being 16 miles from New-Brunswick, 30 miles from Trenton, and 45 miles from Philadelphia; the purchaser can enter on the premises immediately. For terms apply to Peter Dumont, on the premises.

May 2, 1782. 4W

17. *New-Jersey Gazette*, 29 May 1782, p. 4.

**T O B E S O L D,**

**A** Valuable farm, containing upwards of three hundred acres of excellent land, adjoining the river Raritan, in the county of Middlesex, within half a mile of Brunswick, which is generally known for its beautiful and healthy situation, one hundred acres of this farm is extraordinary timberland, about twenty acres very good meadow and more may be easily made, on it is a fine young orchard of the best grafted apple-trees, and a variety of other fruit, the whole is well watered, and a stream runs through it which in the present dry season produces a plentiful supply of water for many useful and profitable branches of business for which the situation is also very convenient; on the premises are, a small house, a good Dutch barn and some other out-buildings.—The terms of purchase will be made known to any person who will apply for that purpose to John Neilson at Trenton, or the subscriber who lives on the farm.

Oct. 18, 1782. 6W† JOHN VOORHEESE.

18. *New-Jersey Gazette*, 13 November 1782, p. 4.

**To be sold, at publick vendue,**

On the twenty-seventh of this month, January, 1783,  
**A** FARM containing 102 acres, 7 acres of which is meadow, and more may be made; and 20 acres of wood land, situate on the road leading from Rocky-Hill to the Baptist meeting-house, in Hope-well, three miles from Pennington, and two from Rocky-Hill: there are on said plantation a good frame house, and kitchen adjoining, a large Dutch barn, and a young bearing orchard; an indisputable title will be given. For terms apply to the subscriber on the premises. MARGARET FURMAN.

Somerset county, January 5, 1783.

**A**DJOINING said plantation will be sold, 30 or 100 acres, as may best suit the purchaser, with a frame house and stable, which will be sold either at publick or private sale, on or before the 27th of this month. Due attendances will be given by

MARGARET FURMAN,  
LEVY STOUT.

3W†

N. B. The same day will be sold on said plantation, horses and cattle, a waggon, ploughs and harrows, and sundry other farming utensils.

19. *New-Jersey Gazette*, 8 January 1783, p. 3.

**P**URSUANT to the last will and testament of John Demund, late of the township of Bedminster, and county of Somerset, deceased, will be offered for sale, on Monday the 14th day of April next, on the premises, between the hours of ten and three o'clock in the afternoon, the plantation whereon the Rev. Doctor Rodgers now lives, containing 103 acres; there is on the premises a stone dwelling-house, with four rooms on a floor, and three fire-places, a kitchen adjoining the same, a good well of water by the door, a large Dutch barn and out-houses, a good bearing orchard, a large bearing orchard, noted for making good cyder, and sundry other fruit trees; a large proportion of said plantation is good meadowland, whereon can be mowed, in a good season, from 15 to 20 tons of good hay; the remainder pasture, wheat and woodland; almost the whole of the premises is enclosed with a fence, whereon is several small enclosures: The said plantation is situate in the township aforesaid, in a pleasant part of the country, in a good neighbourhood, near a house of publick worship, and near several good mills; it adjoins the publick road that leads from New-Geimantown to Morris-Town. Any person or persons inclining to purchase, are desired to attend on the day aforesaid, when the conditions of sale will be made known on the premises by the subscriber, THOMAS BERRY, Execut.

March 24, 1783. 3W†

20. *New-Jersey Gazette*, 2 April 1783, p. 4.

**To be S O L D,**

**A** VALUABLE Plantation or tract of Land, in New-Jersey, Somerset County, about six miles from New-Brunswick, situate being and joining the Six Mile Run church, on the main main roads to Princeton and Middlebush, now in the tenure of John Bogart, containing about 325 acres, including two lots of about 55 acres of the very best of timber or woodland in the Great Swamp, very handy to said plantation, about 270 acres of said farm is cleared, the remainder is well timbered, the whole is very well watered and lays so that it may be divided with ease into two plantations, as may best suit the purchaser; there are on said plantation two very good frame houses, and a Dutch barn, both barn and houses covered with cedar, a good bearing orchard, 15 or 16 acres of meadow, and much more may be made with little expence; the land is very good for grazing, wheat, and other grain.

Also, that pleasant situate house and lot of ground on which the subscriber now lives, township of Hillsborough, county and state aforesaid; the house is 50 feet front, about 40 deep, two stories high, four rooms on a floor, with an entry of 10 feet wide, and a large kitchen; a small barn, smoke house, and other out houses; a very good garden, a good well and spring, and in a good and plentiful neighbourhood. Payments if wanted, will be made easy. For conditions apply to the subscriber (at present on the premises) or to Mr. Harry Peters, Queen-Street, Peck-Slip, No. 167, New-York.

ABRAHAM DURYEA.

January 18, 1784.

N. B. About 15 or 16 acres of wheat and rye in the ground.

21. *Political Intelligencer*, 20 January 1784, p. 3.



## TO BE SOLD,

**A FARM**, situated in Hillsborough township, county of Somerset, joining the river Raritan, withing one mile of where the north and south branches of said river meets, containing two hundred and one acres and eight tenths of an acre, about forty acres of which is woodland, twenty acres of meadow which produces yearly from 30 to 50 loads good English hay, the remainder good easy plow land, as fare for all kinds of grain as any in that part of the country, a good bearing orchard with upwards of one hundred bearing apple trees that produce yearly about 40 barrels cyder; a genteel, roomy dwelling house, with kitchens nearly joining the same, a large Dutch barn, barracks, and cribs, conveniently situated for storing grain, a well of good water at the door, and garden pailed in; the farm in general in excellent tenantable order. Any person inclining to purchase said farm, can apply for terms to Benjamin Taylor and Willet Taylor on the premises, who will give an indisputable title for the same. 3w

State of New Jersey, April 19 1784.

22. *Political Intelligencer*, 20 April 1784, p. 3.

## *A Farm to be Sold,*

By the subscriber, situated on Mine-Brook, in Barnard's township, in the county of Somerset, and state of New-Jersey, on the road leading from Morristown to the White House, and four miles distant from Bakenridge meetinghouse,

**CONTAINING** upwards of 200 acres of good land, 80 acres of which are well timbered, upwards of 20 acres of good meadow, and more may be easily made; the whole exceeding well watered, having a constant stream in each field: There are on the premises a good dwellinghouse and kitchen, a good Dutch barn, a never failing spring in the house, and a large orchard:—It is also very convenient to both grist and sawmill. Any person inclining to purchase, may know the terms by applying to the subscriber living on the premises. **ANDREW KIRKPATRICK.**

March 11, 1784.

4w†

23. *New-Jersey Gazette*, 20 April 1784, p. 4.

## ADVERTISEMENT.

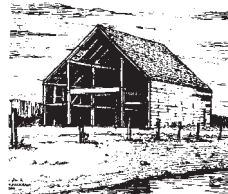
To be **SOLD** at PUBLIC VENDUE, on Wednesday the 20th instant;

**T**hat valuable **FARM** where the late William Kerr formerly lived, containing 235 acres, about 70 of which is good wood land, and a sufficient quantity of meadow of the best English grass; there is on said farm a good Dwelling House, with five rooms on the lower floor, a large Dutch Barn, a kitchen and a well of water near the house; the whole in good fence, and is well watered in every field; with an orchard of good fruit; the said farm is in Bedminster township, Somerset county, about a mile from Lamberton meeting house, near sundry merchant mills, 20 miles from New-Brunswick, and in a healthy part of the country. Reasonable payments will be given to the purchaser, and an indisputable title. The vendue will begin at twelve o'clock on said day, and attendance given by

**DAVID KERR.**

October 11, 1784.

24. *Political Intelligencer*, 19 October 1784, p. 1.



## DUTCH BARN PRESERVATION SOCIETY NEWSLETTER

This newsletter is printed by the Dutch Barn Preservation Society, a non-profit organization incorporated by the Regents of the State of New York.

### Dutch Barn Preservation Society Board Members

Ned Pratt, *President*  
Walter R. Wheeler, *Vice President*  
Keith Cramer, *Secretary*  
Thomas Lanni, *Treasurer*

Brandt A. Bolding  
Allan Dietz  
Robert Hedges  
Paul R. Huey  
Everett Rau  
Alvin W. Sheffer  
Jordan Schlanger  
Henry Vanderwerken  
Peter Sinclair, *Trustee Emeritus*

### Editor:

Walter R. Wheeler  
(518) 283-0534  
wwheeler@hartgen.com

### Design & Printing:

Modern Press

The Dutch Barn Preservation Society  
Mabee Farm Historic Site  
1080 Main Street Route 5S  
Rotterdam Junction, NY 12150  
www.dutchbarns.org

All memberships run from Jan. 1 to Dec. 31.

### Membership:

\$50. (supporting)  
\$35. (contributing)  
\$20. (regular)  
\$10. (student)

*Organizational Membership:* \$25.00

*Individual Copies of Newsletter:* \$2.00