

Coeymans House Preliminary Report

Carol Griggs
Cornell Tree-Ring Laboratory
Cornell University
Ithaca, NY 14805

On 29 March 2011, we (Sturt Manning, Bill and I) collected 15 samples:

- AAC-1 to 6: sections from 6 floorboards - 4 possibly from the main house (pitch pine), 1 possibly from the north section (white pine), and 1 from either location (pitch pine).
- AAC-7 to 8, and 14: barn (originally built in Albany(?), moved to (or built in) Schoharie) then moved here recently - #7 section from roof rafter (hemlock), #s 8 and 14 cores from the ends of horizontal beams (probably pitch pine).
- AAC-9 to 11, and 15: cellar of "north house" - #s 9 and 10 from extant beams, #11 from a loose beam thought to have been from the north house(?); all are oak. #15 is a section from a slender ash pole in the wall of the first floor.
- AAC-12 to 13: cellar of main house - two from two adzed N-S beams in the cellar at the south end of the house, #12 from the west side (wine cellar), #13 from the east side to the north of the outer door; all are oak.

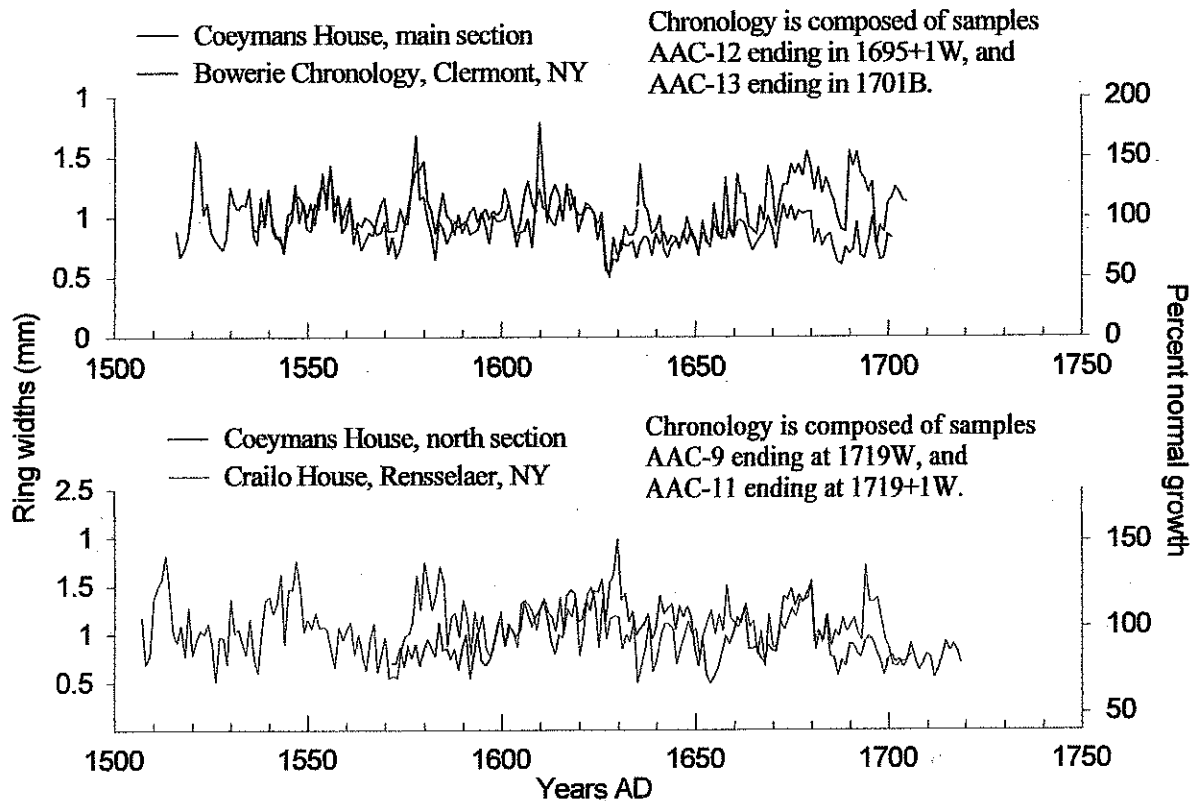


Figure 1. The chronologies from the dated Coeymans House chronologies compared to two other historic building chronologies. See below for explanations.

Terms used in graph: "W" – waney edge present, the outer ring directly under the bark when the tree was felled; "B" – bark present; "+1" – incomplete ring after the measured sequence.

Y-axis on left side – average ring widths of the Coeymans House chronologies; and
Y-axis on right side – detrended values of the average ring widths in the other site chronologies.

AAC-12 (1696+W): core from west side of main house cellar (wine cellar) from 4th E-W beam north of the outer door.

AAC-13 (1701B): core from east side of main house cellar, from 1st E-W beam north of outer door.

The two cores from the main house came from beams that are more likely to have been from an earlier date than the north house due to their length (both ~180 rings) and smaller ring-widths. The tree-ring patterns match ("crossdate") best with E. R. Cook's South Hudson Oak Chronology and with the chronology from the Bowerie House in Clermont, NY, south and across the river from Coeymans. Both contain waney edge or bark, so the years 1696 and 1701 are their felling dates. The adzed beams are very different than the sawn beams in the northern side of the main building's cellar, which gives two possibilities - that this part of the cellar had been the first, much smaller, building with one addition, perhaps the earliest part of this building; or additions to an original building represented by the cellar in the north portion with the sawn beams?

AAC-9 (1719W): core from middle beam in the North House cellar, the 2nd N-S beam from the outer door.

AAC-11 (1720+W): core from a loose beam in the North House cellar.

AAC-10 (probably 1719W): core from a west beam in the North House cellar, the 4th N-S beam from the outer door. This core is very damaged, but the measurements I have taken do corroborate with the 1719-1720 building date.

The cores from the north section are in much poorer condition, in general, than those from the main building. The sequences are shorter, with wider ring-widths. Their tree-ring patterns crossdate best with the chronology from the Crailo House, and E. R. Cook's Albany Oak Chronology, from buildings and forests sites north of Coeymans.

Acknowledgments: Thanks to Sturt Manning and Bill Griggs for their help in collecting the samples; and to E.R. Cook for his chronologies.